

# MEN'S TRAINING

2018



**NIKE**  
**TEAM**  
**SPORTS**





## **MEN'S TRAINING**

---

### **2018**

---

<b>DIGITAL</b>	<b>1</b>
<b>STOCK</b>	<b>8</b>
<b>JORDAN</b>	<b>48</b>
<b>HEADWEAR</b>	<b>54</b>
<b>FOOTWEAR</b>	<b>56</b>
<b>EQUIPMENT</b>	<b>57</b>
<b>ACCESSORIES</b>	<b>58</b>

---

**NIKE**  
**TEAM**  
**SPORTS**



**NIKE DIGITAL THERMA FULL ZIP HOODIE 897091 \$168.00\*** 🍁

**SIZES:** S, M, L, XL, 2XL, 3XL, 4XL \*15% upcharge for ST, MT, LT, XLT, 2XLT, 3XLT, 4XLT

**FABRIC:** 100% polyester.

**OFFER DATE:** 01/01/18 **END DATE:** 01/01/21

Fully sublimated Therma-FIT full zip hoodie. Clean, modern fit and design with raglan sleeves, scuba hood, and sleek infinity front pocket. Color block options on side panel, sleeves, and hood. Ability to sublimates team name, number and logo and able to customize Swoosh color and drawcord. Body width: 23.5", Body length: 29.5" (size large). Tall sleeve length: +2.375" (all sizes).

---



**NIKE DIGITAL THERMA PANT 897171 \$133.00** 🍁

**SIZES:** XS, S, M, L, XL, 2XL 15% upcharge for 3XL, 4XL, LT, XLT, 2XLT, 3XLT, 4XLT

**FABRIC:** 100% polyester.

**OFFER DATE:** 01/01/18 **END DATE:** 01/01/21

Fully sublimated Therma-FIT pant. Classic clean straight leg loose modern fit. Ability to sublimates team name, number and logo and able to customize Swoosh color and drawcord. Hip width: 23", Inseam length: 31.25" (size large). Tall inseam length: +2.375"

---



# NIKE DIGITAL THERMA PULLOVER HOODIE

846363 \$145.00\* 



**SIZES:** S, M, L, XL, 2XL, 3XL, 4XL \*15% upcharge for ST, MT, LT, XLT, 2XLT, 3XLT, 4XLT

**FABRIC:** 100% polyester.

**OFFER DATE:** 06/01/17 **END DATE:** 06/01/20

Fully sublimated Therma-FIT pull-over hoodie. Clean, modern fit and design with raglan sleeves, scuba hood, and sleek "infinity" front pocket. Customize with optional Nike team sport graphics on side panel, sleeves, and hood. Ability to sublimate team name, number and logo and able to customize Swoosh design trademark color. Body width: 23.5", Body length: 29.5" (size large), Tall body and sleeve length: +2.375" (all sizes).





**NIKE DIGITAL EARLY SEASON POLO** 845715 **\$112.00**   CUSTOMIZE IT

**SIZES:** S, M, L, XL, 2XL, 3XL, 4XL **FABRIC:** 100% polyester.

**OFFER DATE:** 04/01/17 **END DATE:** 04/01/20

Elevated polo with fabric mixing at sleeves. Swoosh design trademark at right chest. Body width: 22.75",  
Body length: 30.25" (size large).

---



**NEW NIKE DIGITAL PRO COMPRESSION**

**1/2 SLEEVE TOP 889172 \$84.00** 🍁

**SIZES:** S, M, L, XL, 2XL, 3XL, 4XL **FABRIC:** Body: 90% polyester/10% spandex. Mesh: 91% polyester/9% spandex.

**OFFER DATE:** 04/01/18 **END DATE:** 01/01/20

Dri-FIT fabric. Compression. Mesh inset for breathability. Football consumer. Geometric camo from Nike Football. Body width: 17.5", Body length: 28.75" (size large).



**NEW NIKE DIGITAL PRO 3QT COMPRESSION TIGHT**

**889168 \$77.00** 🍁

**SIZES:** S, M, L, XL, 2XL, 3XL, 4XL **FABRIC:** Body: 90% polyester/10% spandex. Mesh: 91% polyester/9% spandex.

**OFFER DATE:** 04/01/18 **END DATE:** 01/01/20

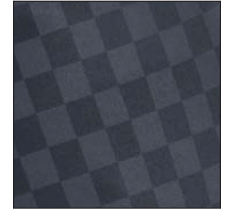
Dri-FIT fabric. Compression. Mesh inset for breathability. Football consumer. Geometric camo from Nike football. Swoosh design trademark on right thigh. Hip width: 15.5", Inseam length: 22" (size large).



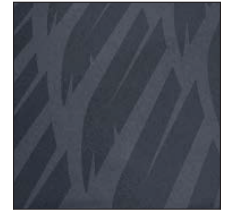
PRINT OPTIONS



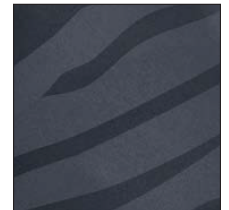
CAMO PRINT



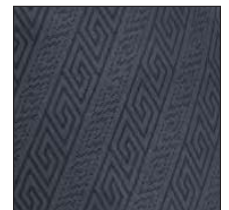
CHECKERED PRINT



FEATHER PRINT



TIGER PRINT



WARRIOR PRINT

**NIKE DIGITAL TEAM COURT CREW 728283 \$84.00**   CUSTOMIZE IT

**SIZES:** XS, S, M, L, XL, 2XL, 3XL **FABRIC:** 100% polyester.

**OFFER DATE:** 01/01/16 **END DATE:** 01/01/19

Designed for the elite level athlete, fully sublimated short sleeve game jersey delivers the ultimate in tennis uniforms. Dri-FIT flat back mesh provided for a high performance jersey. Fully customized with the ability for a unique team name or logo placed at the upper left front or center front. Body width: 22", Body length: 30.25" (size large).



**NIKE DIGITAL TEAM COURT SHORT 728303 \$84.00**   CUSTOMIZE IT

**SIZES:** XS, S, M, L, XL, 2XL, 3XL **FABRIC:** 100% polyester.

**OFFER DATE:** 01/01/16 **END DATE:** 01/01/19

Fully sublimated short in Dri-FIT flat back mesh fabric. Side pockets for ball storage. Customizable with team logo, color blocking. Hip width: 23.25" (size large), Inseam length: 9" (all sizes).



**NIKE DIGITAL WOVEN SHORT 835897 \$91.00\***   CUSTOMIZE IT

**SIZES:** XS, S, M, L, XL, 2XL \*15% upcharge for 3XL, 4XL **FABRIC:** 100% polyester.

**OFFER DATE:** 01/01/17 **END DATE:** 01/01/20

Fully sublimated woven short for full range of motion and durability. Motion vent for zero distractions, wrapped design lines to the body in motion with the ability to customize with team color and embellishment. Elastic waistband and internal drawcord for adjustability. Standard fit 9 for all athletes and sports. Hip width: 23.5", Inseam length: 9" (size large).



# DIGITAL OPTIONS

## COLOR OPTIONS



### LETTER FONT OPTIONS: Height will vary based on team name.

**NEW** Nike Uncontested – 1 or 2 color

ABCDEFGHIJKLMNOPQRSTUVWXYZ

Full Block – 1 or 2 color – (Also available in Condensed version)

ABCDEFGHIJKLMNOPQRSTUVWXYZ

Athletic Shadow – 1 or 2 color

ABCDEFGHIJKLMNOPQRSTUVWXYZ

Bureau – 1 or 2 color

ABCDEFGHIJKLMNOPQRSTUVWXYZ

Cougars – 1 or 2 color – (Not available in Arched or Vertical Arched)

ABCDEFGHIJKLMNOPQRSTUVWXYZ

Glades Bold – 1 or 2 color

ABCDEFGHIJKLMNOPQRSTUVWXYZ

Ithaca – 1 or 2 color

ABCDEFGHIJKLMNOPQRSTUVWXYZ

Kansas – 1 or 2 color

ABCDEFGHIJKLMNOPQRSTUVWXYZ

Michigan State – 1 or 2 color

ABCDEFGHIJKLMNOPQRSTUVWXYZ

Tuscon Bold – 1 or 2 color – (Also available in Condensed version)

ABCDEFGHIJKLMNOPQRSTUVWXYZ

Boulder Bold – 1 or 2 color

ABCDEFGHIJKLMNOPQRSTUVWXYZ

Orange – 1 or 2 color

ABCDEFGHIJKLMNOPQRSTUVWXYZ

Script – 1 or 2 color

ABCDEFGHIJKLMNOPQRSTUVWXYZ

Script Lower Case – 1 or 2 color

abcdefghijklmnopqrstuvwxyz

### NUMBER FONT OPTIONS: Height will vary by style.

**NEW** Nike Uncontested – 1 or 2 color

1234567890

Full Block – 1 or 2 color – (Also available in Condensed version)

1234567890

Athletic Shadow – 1 or 2 color

1234567890

Bureau – 1 or 2 color

1234567890

Cougars – 1 or 2 color – (Not available in Arched or Vertical Arched)

0123456789

Glades Bold – 1 or 2 color

1234567890

Ithaca – 1 or 2 color

1234567890

Kansas – 1 or 2 color

1234567890

Michigan State – 1 or 2 color

1234567890

Tuscon Bold – 1 or 2 color – (Also available in Condensed version)

1234567890

Gridiron – 3 color only

1234567890

Boulder Bold – 3 color only

1234567890

Orange – 1 or 2 color

1234567890

# NEW NIKE PRO

2018 



NIKE PRO COMPRESSION SS  
908083  
Page 12

NIKE DRY PANT  
897038  
Page 22



NIKE PRO COMPRESSION SLEEVELESS  
908084  
Page 14

NIKE PRO SHORT  
908092  
Page 16



NIKE PRO COMPRESSION LS  
908082  
Page 9

NIKE DIGITAL THERMA PANT  
897171  
Page 1



NIKE PRO FITTED SS  
908090  
Page 13

NIKE 2 POCKET FLY SHORT  
728233  
Page 47



NIKE PRO FITTED LS  
908089  
Page 10

NIKE TEAM FLY SHORT  
728220  
Page 47



## NIKE PRO HYPERWARM COMPRESSION MOCK

867306 \$84.50 

**SIZES:** S, M, L, XL, 2XL, 3XL **FABRIC:** 88% polyester/12% spandex.

**OFFER DATE:** 07/01/17 **END DATE:** 07/01/19

Nike Pro Hyperwarm warming yarn technology, zoned engineered panels for breathable warmth, compression body led design, strategically placed seams allow for increased range of motion, engineered panels provide warmth where it's needed and breathability to keep athletes from over heating. Warming yarn technology traps warm air to keep athletes comfortable training/game day in cold weather conditions. Body width: 18", Body length: 27.75" (size large).

010 Black/(Cool Grey)	064 Flint Grey/(Black)	100 White/(Black)
419 College Navy/(Cool Grey)	493 Game Royal/(Cool Grey)	657 University Red/(Cool Grey)



BACK VIEW

## NIKE PRO HYPERWARM TIGHT 867305 \$84.50

**SIZES:** S, M, L, XL, 2XL, 3XL **FABRIC:** 88% polyester/12% spandex.

**OFFER DATE:** 07/01/17 **END DATE:** 07/01/19

Nike Pro Hyperwarm warming yarn technology, zoned engineered panels for breathable warmth, compression body led design, strategically placed seams allow for increased range of motion, engineered panels provide warmth where it's needed and breathability to keep athletes from over heating. Warming yarn technology traps warm air to keep athletes comfortable training/game day in cold weather conditions.. Hip width: 16.5", Inseam length: 28" (size large).

010 Black/(White)	100 White/(Black)
-------------------	-------------------





## NIKE PRO COOL COMPRESSION LONG SLEEVE TOP

728047 \$45.50 

**SIZES:** S, M, L, XL, 2XL, 3XL **FABRIC:** 100% polyester.

**OFFER DATE:** 10/01/15 **END DATE:** 01/01/18

Key features: Dri-FIT fabric, lightweight & breathable, flatlock seams to reduce irritation from chafing. New zoned ventilation for thermoregulation. What's new and improved: raglan sleeve construction for increased mobility, vented side hem with drop tail. Zoned thermoregulation with back panel mesh. Branded verbiage inside droptail to communicate compression fit, consumer/workout: indoor/outdoor gameday or training, fit/feel: Lightweight four-way stretch jersey provides mobility. Mesh back panel provides zoned thermoregulation. "Compression" fit for locked in feel and increased proprioception. Body width: 17.5", Body length: 28.75" (size large).

010 Black/(Cool Grey)	022 Carbon Heather/(Black)	100 White/(Cool Grey)
341 Gorge Green/(Cool Grey)	419 College Navy/(Cool Grey)	494 Game Royal/(Cool Grey)
545 Court Purple/(Cool Grey)	610 Team Maroon/(Cool Grey)	658 University Red/(Cool Grey)
669 Deep Maroon/(Cool Grey)		



## NIKE PRO LONG SLEEVE COMPRESSION TOP

908082 \$45.50 

**SIZES:** S, M, L, XL, 2XL, 3XL, 4XL, LT, XLT, 2XLT, 3XLT, 4XLT **FABRIC:** 92% polyester/8% spandex.

**OFFER DATE:** 01/01/18 **END DATE:** 01/01/20

Dri-FIT four way stretch provides complete range of motion. Flat seams for zero distraction, reduced irritation. Dri-FIT properties for moisture management keeping our athlete comfortable during performance. Compression fit for locked in feel and muscle support. Shaped athlete crew for all day comfort. Reduced seaming and addition of underarm mesh for added comfort and support. Center front Swoosh design trademark for more athletic look indoor/outdoor training or gameday. Body width: 17.5", Body length: 29" (size large).

010 Black/(White)	091 Carbon Heather/(Black)	100 White/(Black)
249 Dark Cinder/(White)	341 Gorge Green/(White)	419 College Navy/(White)
493 Game Royal/(White)	545 Court Purple/(White)	610 Team Maroon/(White)
657 University Red/(White)	669 Deep Maroon/(White)	



**NIKE PRO COOL FITTED LONG SLEEVE TOP 728052 \$45.00** 🍁

**SIZES:** S, M, L, XL, 2XL, 3XL **FABRIC:** 100% polyester.

**OFFER DATE:** 10/01/15 **END DATE:** 01/01/18

Key technology: Dri-FIT fabric, key features: Lightweight & breathable, flatlock seams to reduce irritation from chafing. New zoned ventilation for thermoregulation. Shaped, low-rise collar, what's new and improved: vented side hem with drop tail for enhanced tuck in performance. Zoned thermoregulation with back panel mesh, who is this for/type of workout: indoor/outdoor gameday or training, fit and feel: Lightweight four-way stretch jersey provides mobility. Mesh back panel provides zoned thermoregulation. "fitted" fit for body skimming performance. Body width: 21", Body length: 30" (size large).

010 Black/(White)	100 White/(Flint Grey)	341 Gorge Green/(White)
419 College Navy/(White)	493 Game Royal/(White)	657 University Red/(White)



BACK DETAIL

**NIKE PRO FITTED LONG SLEEVE TOP 908089 \$45.00** 🍁

**SIZES:** S, M, L, XL, 2XL, 3XL **FABRIC:** 92% polyester/8% spandex.

**OFFER DATE:** 01/01/18 **END DATE:** 01/01/20

Dri-FIT four way stretch provides complete range of motion. Flat seams for zero distraction, reduced irritation. Dri-FIT properties for moisture management keeping our athlete comfortable during performance. Fitted fit for body skimming performance. Shaped athlete crew for all day comfort. Reduced seaming and addition of underarm mesh for added comfort and support. Center front swoosh for more athletic look indoor/outdoor training or gameday. Body width: 21.25", Body length: 29" (size large).

010 Black/(White)	100 White/(Black)	341 Gorge Green/(White)
419 College Navy/(White)	493 Game Royal/(White)	657 University Red/(White)



**NEW NIKE STOCK COMPRESSION 1/2 SLEEVE**

**TOP 889174 \$39.00** 

**SIZES:** S, M, L, XL, 2XL, 3XL, 4XL **FABRIC:** 92% polyester/8% spandex.

**OFFER DATE:** 01/01/18 **END DATE:** 10/01/20

Need description. Body width: 17.5", Body length: 28.75" (size large).

010 Black/(White)	060 Anthracite/(White)	100 White/(Black)
341 Dark Green/(White)	419 Navy/(White)	493 Royal/(White)
545 Purple/(White)	610 Cardinal/(White)	657 Scarlet/(White)
669 Dark Maroon/(White)		



**NIKE PRO COOL COMPRESSION 1/2 SLEEVE TOP**

**719903 \$39.00** 

**SIZES:** S, M, L, XL, 2XL, 3XL, 4XL **FABRIC:** 92% polyester/8% spandex.

**OFFER DATE:** 10/01/16 **END DATE:** 01/01/18

New zoned thermoregulation with back panel mesh. Raglan sleeve construction for increased mobility. Ventilated side hem with drop tail. Compression fit for locked in feel and increased proprioception. Lightweight all over four way stretch Dri-FIT jersey fabric provides ultimate moisture management on game day. Flatlock seams to reduce irritation from chafing. #3 Swoosh design trademark at left arm. Nike pro center back read. Body width: 17.5", Body length: 28.75" (size large).

010 Black/(White)	060 Carbon Heather/(Black)	100 White/(White)
341 Dark Green/(White)	419 Navy/(White)	493 Royal/(White)
545 Purple/(White)	610 Cardinal/(White)	657 Scarlet/(White)
669 Dark Maroon/(White)		



## NIKE PRO COOL COMPRESSION SHORT-SLEEVE TOP

728048 \$39.00 

**SIZES:** S, M, L, XL, 2XL, 3XL **FABRIC:** 100% polyester.

**OFFER DATE:** 10/01/15 **END DATE:** 01/01/18

Key features: Dri-FIT fabric, lightweight & breathable, flatlock seams to reduce irritation from chafing. New zoned ventilation for thermoregulation. What's new and improved: raglan sleeve construction for increased mobility, vented side hem with drop tail. Zoned thermoregulation with back panel mesh. Branded verbiage inside droptail to communicate compression fit, consumer/workout: indoor/outdoor gameday or training, fit/feel: Lightweight four-way stretch jersey provides mobility. Mesh back panel provides zoned thermoregulation. "Compression" fit for locked in feel and increased proprioception. Body width: 17.5", Body length: 28.75" (size large).

010 Black/(Cool Grey)	022 Carbon Heather/(Black)	100 White/(Cool Grey)
341 Gorge Green/(Cool Grey)	419 College Navy/(Cool Grey)	494 Game Royal/(Cool Grey)
545 Court Purple/(Cool Grey)	610 Team Maroon/(Cool Grey)	658 University Red/(Cool Grey)
669 Deep Maroon/(Cool Grey)	727 Sundown/(Cool Grey)	784 Team Gold/(Cool Grey)
888 University Orange/(Cool Grey)		



## NIKE PRO SHORT SLEEVE COMPRESSION TOP

908083 \$39.00 

**SIZES:** S, M, L, XL, 2XL, 3XL, 4XL, XLT, 2XLT, 3XLT **FABRIC:** 92% polyester/8% spandex.

**OFFER DATE:** 01/01/18 **END DATE:** 01/01/20

Dri-FIT four way stretch provides complete range of motion. Flat seams for zero distraction, reduced irritation. Dri-FIT properties for moisture management keeping our athlete comfortable during performance. Compression fit for locked in feel and muscle support. Shaped athlete crew for all day comfort. Increased sleeve length to encapsulate the bicep to help reduce sleeve bunching. Reduced seaming and addition of underarm mesh for added comfort and support. Center front swoosh for more athletic look indoor/outdoor training or gameday. Body width: 17.5", Body length: 29" (size large).

010 Black/(White)	091 Carbon Heather/(Black)	100 White/(Black)
249 Dark Cinder/(White)	341 Gorge Green/(White)	419 College Navy/(White)
493 Game Royal/(White)	545 Court Purple/(White)	610 Team Maroon/(White)
657 University Red/(White)	669 Deep Maroon/(White)	732 Sundown/(Black)
783 Team Gold/(Black)	888 University Orange/(White)	





## NIKE PRO HYPERCOOL FITTED SHORT-SLEEVE TOP

835591 **\$58.50** 

**SIZES:** XS, S, M, L, XL, 2XL, 3XL **FABRIC:** 89% polyester/11% spandex.

**OFFER DATE:** 01/01/17 **END DATE:** 04/01/19

Hypercool technology with Dri-FIT fabric. Yarn technology for enhanced cooling, thermoregulation & breathability, minimal seaming, shaped athlete collar for increased comfort fitted body skimming fit. Yarn technology used to provide cooler hand feel & enhanced cooling sensation, breathable materials used for main body and high heat zones provide thermoregulation (40% more breathable than previous hypercool), mesh side panel wraps to front of the body to provide air intake while moving, allowing air to wrap the body and exit through back panel designed for use during indoor/outdoor training. Body width: 20.25", Body length: 29.5" (size large).

010 Black/Cool Grey/(Cool Grey)	100 White/Cool Grey/(Cool Grey)	341 Gorge Green/Cool Grey/(Cool Grey)
419 College Navy/Cool Grey/(Cool Grey)	480 Game Royal/Cool Grey/(Cool Grey)	657 University Red/Cool Grey/(Cool Grey)



BACK DETAIL

## NIKE PRO COOL FITTED SHORT-SLEEVE TOP

728066 **\$39.00** 

**SIZES:** S, M, L, XL, 2XL, 3XL **FABRIC:** 100% polyester.

**OFFER DATE:** 10/01/15 **END DATE:** 01/01/18

Key technology: Dri-FIT fabric, key features: Lightweight & breathable, flatlock seams to reduce irritation from chafing. New zoned ventilation for thermoregulation. Shaped, low-rise collar, what's new and improved: vented side hem with drop tail for enhanced tuck in performance. Zoned thermoregulation with back panel mesh, who is this for/type of workout: indoor/outdoor gameday or training, fit and feel: Lightweight four-way stretch jersey provides mobility. Mesh back panel provides zoned thermoregulation. "fitted" fit for body skimming performance. Body width: 21", Body length: 30" (size large).

010 Black/(White)	100 White/(Flint Grey)	341 Gorge Green/(White)
419 College Navy/(White)	493 Game Royal/(White)	657 University Red/(White)



BACK DETAIL

## NIKE PRO FITTED SHORT SLEEVE TOP 908090 **\$39.00**

**SIZES:** S, M, L, XL, 2XL, 3XL **FABRIC:** 92% polyester/8% spandex.

**OFFER DATE:** 01/01/18 **END DATE:** 01/01/20

Dri-FIT four way stretch provides complete range of motion. Flat seams for zero distraction, reduced irritation. Dri-FIT properties for moisture management keeping our athlete comfortable during performance. Fitted fit for body skimming performance. Shaped athlete crew for all day comfort. Reduced seaming and addition of underarm mesh for added comfort and support. Center front Swoosh design trademark for more athletic look indoor/outdoor training or gameday. Body width: 21.25", Body length: 29" (size large).

010 Black/(White)	100 White/(Black)	341 Gorge Green/(White)
419 College Navy/(White)	493 Game Royal/(White)	657 University Red/(White)



## NIKE PRO COOL COMPRESSION SLEEVELESS TOP

728044 \$39.00 

**SIZES:** S, M, L, XL, 2XL, 3XL **FABRIC:** 100% polyester.

**OFFER DATE:** 10/01/15 **END DATE:** 01/01/18

Key features: Dri-FIT fabric, lightweight & breathable, flatlock seams to reduce irritation from chafing. New zoned ventilation for thermoregulation. What's new and improved: vented side hem with drop tail. Zoned thermoregulation with back panel mesh. Branded verbiage inside droptail to communicate compression fit, consumer/workout: indoor/outdoor gameday or training, fit/feel: Lightweight four-way stretch jersey provides mobility. Mesh back panel provides zoned thermoregulation. "Compression" fit for locked in feel and increased proprioception. Body width: 17", Body length: 28.75" (size large).

010 Black/(Cool Grey)	022 Carbon Heather/(Black)	100 White/(Cool Grey)
341 Gorge Green/(Cool Grey)	419 College Navy/(Cool Grey)	494 Game Royal/(Cool Grey)
545 Court Purple/(Cool Grey)	610 Team Maroon/(Cool Grey)	658 University Red/(Cool Grey)
669 Deep Maroon/(Cool Grey)	784 Team Gold/(Cool Grey)	



## NIKE PRO SLEEVELESS COMPRESSION TOP 908084 \$39.00

**SIZES:** S, M, L, XL, 2XL, 3XL, 4XL, LT, XLT, 2XLT, 3XLT, 4XLT **FABRIC:** 92% polyester/8% spandex.

**OFFER DATE:** 01/01/18 **END DATE:** 01/01/20

Dri-FIT four way stretch provides complete range of motion. Flat seams for zero distraction, reduced irritation. Dri-FIT properties for moisture management keeping our athlete comfortable during performance. Compression fit for locked in feel and muscle support. Shaped athlete crew for all day comfort. Reduced seaming and addition of underarm mesh for added comfort and support. Center front swoosh for more athletic look indoor/outdoor training or gameday. Body width: 17.5", Body length: 28.75" (size large).

010 Black/(White)	091 Carbon Heather/(Black)	100 White/(Black)
341 Gorge Green/(White)	419 College Navy/(White)	493 Game Royal/(White)
545 Court Purple/(White)	610 Team Maroon/(White)	657 University Red/(White)
669 Deep Maroon/(White)	783 Team Gold/(White)	





**NIKE PRO COOL COMPRESSION 3/4 TIGHT 828642 \$41.60** 

**SIZES:** S, M, L, XL, 2XL, 3XL, 4XL **FABRIC:** 100% polyester.

**OFFER DATE:** 01/01/16 **END DATE:** 01/01/18

Key technology: Dri-FIT fabric, key features: lightweight & breathable, flatlock seams to reduce irritation from chafing. Provides moisture management for gameday, what's new and improved: mesh gusset and inner leg panel for increased zoned thermoregulation. Updated npc waistband, who is this for/type of workout: indoor/outdoor gameday or training, fit and feel: lightweight all over four-way stretch jersey provides mobility and compression fit for locked in feel and increased proprioception. Hip width: 15.5", Inseam length: 18" (size large).

010 Black/(White)	022 Carbon Heather/(Black)	100 White/(Black)
419 College Navy/(White)	493 Game Royal/(White)	657 University Red/(White)



**NEW NIKE PRO 3/4 TIGHT AH7100 \$41.60** 

**SIZES:** S, M, L, XL, 2XL, 3XL, 4XL **FABRIC:** Body: 90% polyester/10% spandex. Mesh: 89% polyester/11% spandex.

**OFFER DATE:** 04/01/18 **END DATE:** 01/01/20

Dri-FIT four way stretch provides complete range of motion. Flat seams for zero distraction, reduced irritation. Dri-fit properties for moisture management keeping our athlete comfortable during performance. Compression fit for locked in feel and muscle support reduced seaming and updated gusset construction for added comfort and support indoor/outdoor training or gameday. Hip width: 15.5", Inseam length: 20.75" (size large).

010 Black/(White)	091 Carbon Heather/(Black)	100 White/(Black)
419 College Navy/(White)	493 Game Royal/(White)	657 University Red/(White)



**NIKE PRO COOL 6" COMPRESSION SHORT 728049 \$36.40** 

**SIZES:** S, M, L, XL, 2XL, 3XL **FABRIC:** 100% polyester.

**OFFER DATE:** 10/01/15 **END DATE:** 01/01/18

Key technology: Dri-FIT fabric. Key features: Lightweight & breathable, flatlock seams to reduce irritation from chafing. Provides moisture management for gameday. What's new and improved: mesh gusset and inner leg panel for increased zoned thermoregulation. Updated NPC waistband, who is this for/type of workout: indoor/outdoor gameday or training, fit and feel: Lightweight all over four-way stretch jersey provides mobility and "Compression" fit for locked in feel and increased proprioception. Hip width: 12.25", Inseam length: 7.75" (size large).

- |                              |                              |                                |
|------------------------------|------------------------------|--------------------------------|
| 010 Black/(Cool Grey)        | 022 Carbon Heather/(Black)   | 100 White/(Cool Grey)          |
| 341 Gorge Green/(Cool Grey)  | 419 College Navy/(Cool Grey) | 493 Game Royal/(Cool Grey)     |
| 545 Court Purple/(Cool Grey) | 610 Team Maroon/(Cool Grey)  | 658 University Red/(Cool Grey) |
| 669 Deep Maroon/(Cool Grey)  |                              |                                |



**NIKE PRO SHORT 908092 \$39.00** 

**SIZES:** S, M, L, XL, 2XL, 3XL, 4XL, LT, XLT, 2XLT, 3XLT, 4XLT **FABRIC:** 92% polyester/8% spandex.

**OFFER DATE:** 01/01/18 **END DATE:** 01/01/20

Dri-FIT four way stretch provides complete range of motion. Flat seams for zero distraction, reduced irritation. Dri-FIT properties for moisture management keeping our athlete comfortable during performance. Compression fit for locked in feel and muscle support. Shaped athlete crew for all day comfort. Reduced seaming and addition of underarm mesh for added comfort and support. Center front Swoosh design trademark for more athletic look indoor/outdoor training or gameday.. Hip width: 15.5", Inseam length: 7.5" (size large).

- |                              |                              |                                |
|------------------------------|------------------------------|--------------------------------|
| 010 Black/(Cool Grey)        | 091 Carbon Heather/(Black)   | 100 White/(Black)              |
| 341 Gorge Green/(Cool Grey)  | 419 College Navy/(Cool Grey) | 493 Game Royal/(Cool Grey)     |
| 545 Court Purple/(Cool Grey) | 610 Team Maroon/(Cool Grey)  | 657 University Red/(Cool Grey) |
| 669 Deep Maroon/(Cool Grey)  |                              |                                |



**NIKE FLUX 3/4 SLEEVE HOODIE 944360 \$91.00** 

**SIZES:** XS, S, M, L, XL, 2XL, 3XL **FABRIC:** 100% polyester.

**OFFER DATE:** 10/01/17 **END DATE:** 10/01/18

Lightweight Dri-FIT french terry performance fleece 3/4 sleeve baseball hoodie with raw edge seams and sleeve openings. Lightweight mesh at interior sleeve openings. Kangaroo pocket and contrast drawcords. Swoosh design trademark printed at right chest. Body width: 24.25", Body length: 29.25" (size large).

071 Charcoal Heather/(Black)



**NIKE FLUX HENLEY 944363 \$58.50** 

**SIZES:** XS, S, M, L, XL, 2XL, 3XL **FABRIC:** 75% polyester/13% cotton/12% rayon.

**OFFER DATE:** 10/01/17 **END DATE:** 10/01/19

Dri-FIT 3-button henley with 3/4 sleeves as preferred by showcase baseball players. Lightweight mesh drop-tail and interior sleeve opening. Swoosh design trademark printed at right chest. Body width: 22", Body length: 32" (size large).

063 Dark Grey Heather/Gym Red/(Gym Red) 064 Dark Grey Heather/Black/(Black) 065 Dark Grey Heather/Rush Blue/(Rush Blue)  
133 Sail/Dark Grey Heather/(Wolf Grey)



BACK VIEW



MESH DROP TAIL HEM DETAIL

**NIKE FLUX PANT 944366 \$84.50** 

**SIZES:** XS, S, M, L, XL, 2XL, 3XL **FABRIC:** 100% polyester.

**OFFER DATE:** 10/01/17 **END DATE:** 10/01/19

Lightweight Dri-FIT french terry performance fleece jogger inspired by the Nike Vapor Elite Baseball Pant. Lightweight mesh at elastic waistband with drawstring. Knit rib at leg openings, and side seam pockets. Screenprinted Swoosh design trademark at right leg. Hip width: 22.5", Inseam length: 32" (size large).

---

071 Charcoal Heather/(Black)



**NIKE FLUX SHORT 944364 \$58.50** 

**SIZES:** XS, S, M, L, XL, 2XL, 3XL **FABRIC:** 100% polyester.

**OFFER DATE:** 10/01/17 **END DATE:** 10/01/18

Lightweight Dri-FIT french terry performance fleece short with raw-edge seams and leg openings. Drawstring waist and side pockets. Lightweight mesh facing inside waistband and at leg openings. Screenprinted Swoosh design trademark at left leg. Hip width: 22.75", Inseam length: 10" (size large).

---

071 Charcoal Heather/(Black)



## NIKE NSW WINDRUNNER JACKET 898730 \$130.00

**SIZES:** XS, S, M, L, XL, 2XL, 3XL **FABRIC:** 100% polyester.

**OFFER DATE:** 01/01/18 **END DATE:** 01/01/21

Iconic Nike woven windrunner silhouette with pop color bindings. Energetic team color blocking at 26 degree chevron. Perfect energy piece for those elevated sport moments. Lifestyle Nike futura Swoosh at left chest. Body width: 25", Body length: 27.75" (size large).

010 Black/Black/Black/(White)

012 Black/White/Wolf Grey/(White)

061 Anthracite/White/Wolf Grey/(White)

420 Navy/White/Wolf Grey/(White)

494 Royal/White/Wolf Grey/(White)

658 Scarlet/White/Wolf Grey/(White)





## NIKE WATERPROOF JACKET 777179 \$260.00

**SIZES:** XS, S, M, L, XL, 2XL, 3XL, 4XL **FABRIC:** 100% polyester.

**OFFER DATE:** 04/01/16 **END DATE:** 04/01/20

Storm-FIT 5 fabric provides protection from the elements. Bonded seams repel wind and rain. Mesh lining in jacket and center back perforated vent system provides breathability. Zip pockets on jacket for secure storage. Reflective chevron and Swoosh for an elevated design. Adjustable hood for ultimate coverage from the elements. Toggle at hem and hook-and-loop tab at cuff for adjustability. Standard fit for ultimate comfort for the modern athlete. Packable pocket technology with ability to place full jacket into pocket for compact storage. Body width: 25", Body length: 30.5" (size large).

---

060 Anthracite/Black/White



## NIKE WATERPROOF PANT 777178 \$182.00

**SIZES:** XS, S, M, L, XL, 2XL, 3XL, 4XL **FABRIC:** 100% polyester.

**OFFER DATE:** 04/01/16 **END DATE:** 04/01/20

Storm-FIT 10 fabric provides protection from the elements. Bonded seams repel wind and rain. Mesh lining in pant provides breathability. Elastic waistband with interior drawcord on pants for an adjustable fit. Zipper at pant hem provides ventilation and easy on/off. Snaps at hem for adjusting the inseam/outseam length, can be shortened up to 1¾". Standard fit for ultimate comfort for the modern athlete. Hip width: 23.25", Inseam length: 31.5" (size large).

---

060 Anthracite/Black/White





## NIKE TEAM WOVEN JACKET 824407 \$78.00

**SIZES:** XS, S, M, L, XL, 2XL, 3XL, 4XL, LT, XLT, 2XLT, 3XLT, 4XLT **FABRIC:** 100% polyester.

**OFFER DATE:** 07/01/16 **END DATE:** 01/01/19

Key Technology: Dri-FIT Fabric. Key Features: Made for movement design lines. What's New and Improved: Minimized cuff and hem trim for zero distractions. Who is this for/Type of Workout: Performance layering in any condition. Fit and Feel: Standard. Body width: 20.75", Body length: 29.75" (size large). Tall body and sleeve length: +2.375" (all sizes).

010 Black/Black/(White)	060 Anthracite/Black/(White)	341 Dk Green/Anthracite/(White)
419 Navy/Anthracite/(White)	493 Royal/Anthracite/(White)	545 Purple/Anthracite/(White)
610 Cardinal/Anthracite/(White)	657 Scarlet/Anthracite/(White)	669 Dk Maroon/Anthracite/(White)



## NIKE TEAM WOVEN PANT 824408 \$65.00

**SIZES:** XS, S, M, L, XL, 2XL, 3XL, 4XL, LT, XLT, 2XLT, 3XLT, 4XLT **FABRIC:** 100% polyester.

**OFFER DATE:** 07/01/16 **END DATE:** 01/01/19

Key Technology: Dri-FIT Fabric. Key Features: Made for movement design lines. What's New and Improved: Who is this for/Type of Workout: Performance layering in any condition. Fit and Feel: Regular – Open Hem. Hip width: 22.75", Inseam length: 30" (size large). Tall inseam length: +2.375" (all sizes).

010 Black/(White)	060 Anthracite/(White)	341 Dark Green/(White)
419 Navy/(White)	493 Royal/(White)	545 Purple/(White)
610 Cardinal/(White)	657 Scarlet/(White)	669 Dark Maroon/(White)



## NIKE DRY JACKET 897025 \$110.50

**SIZES:** S, M, L, XL, 2XL, 3XL, 4XL, LT, XLT, 2XLT, 3XLT, 4XLT **FABRIC:** 100% polyester.

**OFFER DATE:** 01/01/18 **END DATE:** 01/01/21

Dri-FIT woven full zip jacket. Loose modern fit through body, fully lined with lightweight mesh and angled side seamed pockets. Excellent for team travel as well as warm up/cool down. Paired with the woven pant creates a woven warm up to wear to and from any game or workout and during warmup and cool down. Best used as his final layer of sport and fitness. Embroidered Swoosh design trademark on right chest. Body width: 23.75", Body length: 32" (size large).

---

010 Black/(White)	060 Anthracite/(White)	419 Navy/(White)
493 Royal/(White)	657 Scarlet/(White)	



## NIKE DRY PANT 897038 \$91.00

**SIZES:** S, M, L, XL, 2XL, 3XL, 4XL, LT, XLT, 2XLT, 3XLT, 4XLT **FABRIC:** 100% polyester.

**OFFER DATE:** 01/01/18 **END DATE:** 01/01/21

Dri-FIT woven full-length classic fit pant. Fully lined with lightweight mesh and zip close side seamed pockets. Elasticized waistband with team color drawcords. Ankle zips for easy on/off over shoes. Excellent for team travel as well as warm up/cool down. Paired with the woven jacket creates a woven warm up to wear to and from any game or workout and during warmup and cool down. Best used as his final layer of sport and fitness. Embroidered Swoosh design trademark on left leg. Hip width: 23.25", Inseam length: 31.5" (size large).

---

010 Black/(White)	060 Anthracite/(White)	419 Navy/(White)
493 Royal/(White)	657 Scarlet/(White)	



## NIKE RIVALRY JACKET 802332 \$84.50

**SIZES:** XS, S, M, L, XL, 2XL, 3XL, 4XL, LT, XLT, 2XLT, 3XLT, 4XLT **FABRIC:** 100% polyester.

**OFFER DATE:** 07/01/16 **END DATE:** 07/01/19

Dri-FIT knit warm-up/travel jacket. Lightweight knit provides optimal comfort. Side pockets. Elastic at cuffs and hem limit distraction. Swoosh design trademark at right chest. Body width: 24.25", Body length: 28.25" (size large). Tall body and sleeve length: +2.375" (all sizes).

010 Black/(White)	065 Cool Grey/(Black)	341 Dark Green/(White)
419 Navy/(White)	493 Royal/(White)	545 Purple/(White)
610 Cardinal/(White)	657 Scarlet/(White)	669 Dark Maroon/(White)



## NIKE RIVALRY PANT 802334 \$71.50

**SIZES:** XS, S, M, L, XL, 2XL, 3XL, 4XL, LT, XLT, 2XLT, 3XLT, 4XLT **FABRIC:** 100% polyester.

**OFFER DATE:** 07/01/16 **END DATE:** 07/01/19

Dri-FIT knit warm-up/travel pant. Lightweight knit provides optimal comfort. Side pockets. Contrast inset side panel. Bungee at leg opening limits distraction. Swoosh design trademark at upper left thigh. Hip width: 23.25", Inseam length: 31" (size large). Tall inseam length: +2.375" (all sizes).

012 Black/White/(White)	065 Cool Grey/Black/(Black)	342 Dark Green/White/(White)
420 Navy/White/(White)	494 Royal/White/(White)	546 Purple/White/(White)
612 Cardinal/White/(White)	658 Scarlet/White/(White)	670 Dark Maroon/White/(White)



**NIKE EPIC JACKET 835571 \$71.50** 

**SIZES:** S, M, L, XL, 2XL, 3XL, 4XL **FABRIC:** 100% polyester.

**OFFER DATE:** 04/01/17 **END DATE:** 04/01/20

Key features: textured knit material and made for movement design lines. What's new and improved: clean taping stripe wraps from shoulder to arm. Minimized cuff and hem trim for zero distractions. Who is this for/type of workout: performance layering in any condition. Fit and feel: standard. Body width: 23", Body length: 29.5" (size large).

020 Black/Anthracite/(White)	062 Anthracite/Black/(White)	361 Dark Green/Anthracite/(White)
418 Navy/Anthracite/(White)	466 Royal/Anthracite/(White)	552 Purple/Anthracite/(White)
656 Scarlet/Anthracite/(White)	691 Dark Maroon/Anthracite/(White)	693 Cardinal/Anthracite/(White)

**Youth #836306-020, 062, 418, 494, 656 / S-XL / \$65.00 / Body width: 18", Body length: 21.5" (size medium)**



**NIKE EPIC PANT 835573 \$58.50** 

**SIZES:** S, M, L, XL, 2XL, 3XL, 4XL **FABRIC:** 100% polyester.

**OFFER DATE:** 04/01/17 **END DATE:** 04/01/20

Key features: textured knit material and made for movement design lines. What's new and improved: clean taping stripe down leg. Who is this for/type of workout: performance layering in any condition. Fit and feel: regular - tapered. Hip width: 23", Inseam length: 30.5" (size large).

020 Black/Anthracite/(White)	062 Anthracite/Black/(White)	361 Dark Green/Anthracite/(White)
418 Navy/Anthracite/(White)	466 Royal/Anthracite/(White)	552 Purple/Anthracite/(White)
656 Scarlet/Anthracite/(White)	691 Dark Maroon/Anthracite/(White)	693 Cardinal/Anthracite/(White)

**Youth #836307-020, 062, 418, 494, 656 / S-XL / \$52.00/ Hip width: 18", Inseam length: 25" (size medium)**



## NIKE TEAM HYPERSPEED FLEECE FULL-ZIP HOODIE

727985 \$104.00 

**SIZES:** S, M, L, XL, 2XL, 3XL **FABRIC:** 100% polyester.

**OFFER DATE:** 01/01/16 **END DATE:** 07/01/19

Key technology: Therma-FIT fabric, key features: scooba hood for added protection. 3-d beveled Swoosh application, what's new and improved: high-energy color blocked panels, who is this for/type of workout: high intensity training, fit and feel: standard fit. Body width: 23.5", Body length: 28.75" (size large).

010 Black/Anthracite/Black/(Black)

013 Black/Anthracite/Scarlet/(White)

014 Black/Anthracite/Royal/(White)

023 Black/Anthracite/Navy/(White)



## NIKE TEAM HYPERSPEED FLEECE PANT 727986 \$91.00

**SIZES:** S, M, L, XL, 2XL, 3XL **FABRIC:** 100% polyester.

**OFFER DATE:** 01/01/16 **END DATE:** 07/01/19

Key technology: Therma-FIT fabric, key features: tapered and cuffed silhouette. 3-d beveled Swoosh application, what's new and improved: high-energy color blocked panels, who is this for/type of workout: high intensity training, fit and feel: standard fit. Hip width: 22.75", Inseam length: 29.25" (size large).

010 Black/Black/(Black)

013 Black/Scarlet/(White)

014 Black/Royal/(White)

023 Black/Navy/(White)





**NIKE TEXTURED DRI-FIT 1/2 ZIP TOP 642042 \$97.50 **

**SIZES:** S, M, L, XL, 2XL, 3XL **FABRIC:** 100% polyester.

**OFFER DATE:** 01/01/15 **END DATE:** 01/01/18

1/2 zip training top in Dri-FIT double knit pique fabrication that wicks moisture away. Zoned mesh panels at the underarm gusset and back neck and sleeve cuff for ventilation and color blocking. #3 Embroidered Swoosh design trademark at right chest. Dri-FIT trademark at lower right hem. Body width: 24.75", Body length: 28.75" (size large).

- |                        |                        |                        |
|------------------------|------------------------|------------------------|
| 010 Black/(Anthracite) | 060 Anthracite/(Black) | 341 Dark Green/(Black) |
| 419 Navy/(Black)       | 493 Royal/(Black)      | 657 Scarlet/(Black)    |



**NIKE DRI-FIT 1/2 ZIP TOP 642039 \$84.50 **

**SIZES:** XS, S, M, L, XL, 2XL, 3XL **FABRIC:** 100% polyester.

**OFFER DATE:** 01/01/15 **END DATE:** 01/01/18

1/2 zip long-sleeve top in our Dri-FIT max material for superior moisture wicking performance. Center front zipper and interior taping for comfort. #3 embroidered Swoosh design trademark at right chest. Dri-FIT trademark at lower right hem. Body width: 22.75", Body length: 28.75" (size large).

- |                         |                        |                     |
|-------------------------|------------------------|---------------------|
| 010 Black/(Anthracite)  | 060 Anthracite/(Black) | 100 White/(Black)   |
| 341 Dark Green/(Black)  | 419 Navy/(Black)       | 493 Royal/(Black)   |
| 545 Purple/(Black)      | 610 Cardinal/(Black)   | 657 Scarlet/(Black) |
| 669 Dark Maroon/(Black) |                        |                     |





**NIKE THERMA LS 1/4 ZIP TOP 897090 \$71.50 **

**SIZES:** XS, S, M, L, XL, 2XL, 3XL **FABRIC:** 100% polyester.

**OFFER DATE:** 01/01/18 **END DATE:** 01/01/21

Dri-FIT and Therma-FIT fabric. Clean, modern fit and design. New fabric is 15% warmer and has 40% less wind chill than prior ko fabric. Updated design lines feature raglan sleeves, versatile performance for any workout. Body width: 23.5", Body length: 29.5" (size large).

- 
- |                      |                        |                         |
|----------------------|------------------------|-------------------------|
| 010 Black/(White)    | 060 Anthracite/(White) | 341 Dark Green/(White)  |
| 419 Navy/(White)     | 493 Royal/(White)      | 545 Purple/(White)      |
| 610 Cardinal/(White) | 657 Scarlet/(White)    | 669 Dark Maroon/(White) |



**NEW NIKE DRY ELEMENT TOP HZ 896691 \$91.00** 

**SIZES:** XS, S, M, L, XL, 2XL, 3XL **FABRIC:** 88% polyester/12% spandex.

**OFFER DATE:** 01/01/18 **END DATE:** 01/01/21

Franchise Dri-FIT half zip that the consumer loves but more breathability with new back mesh. Drop shoulder sleeve for an updated modern look. Improved collar with facing for stability. Dropped back hemline for coverage with overall relaxed body fit. Thumbhole construction ensures arm is not exposed when not using the thumbhole. Body width: 21.75", Body length: 30.5" (size large).

- |                                |                           |                          |
|--------------------------------|---------------------------|--------------------------|
| 010 Black/(White)              | 011 Black/Heather/(White) | 060 Anthracite/(White)   |
| 061 Anthracite/Heather/(White) | 100 White/(White)         | 341 Dark Green/(White)   |
| 342 Dark Green/Heather/(White) | 419 Navy/(White)          | 420 Navy/Heather/(White) |
| 493 Royal/(White)              | 494 Royal/Heather/(White) | 657 Scarlet/(White)      |
| 658 Scarlet/Heather/(White)    |                           |                          |



**NIKE THERMA HOODIE PO 867302 \$71.50** 

**SIZES:** S, M, L, XL, 2XL, 3XL, 4XL **FABRIC:** 100% polyester.

**OFFER DATE:** 07/01/17 **END DATE:** 07/01/19

Key technology: Dri-FIT and Thermo-FIT fabric. Key Features: Clean, modern fit and design. What's new and improved: New fabric is 15% warmer and has 40% less wind chill than prior ko fabric. Updated design lines feature raglan sleeves, scuba hood, and sleek "infinity" front Pocket. Who is this for/type of workout: Versatile performance for any workout. Fit and feel: Clean, modern fit and design. Body width: 23.5", Body length: 29.25" (size large).

010 Black/(White)	060 Anthracite/(White)	341 Dark Green/(White)
419 Navy/(White)	493 Royal/(White)	545 Purple/(White)
610 Cardinal/(White)	657 Scarlet/(White)	669 Dark Maroon/(White)



**NIKE THERMA CREW 867303 \$65.00** 

**SIZES:** S, M, L, XL, 2XL, 3XL, 4XL **FABRIC:** 100% polyester.

**OFFER DATE:** 07/01/17 **END DATE:** 07/01/19

Key technology: Dri-FIT and Thermo-FIT fabric. Key features: clean, modern fit and design. What's new and improved: new fabric is 15% warmer and has 40% less wind chill than prior ko fabric. Updated design lines feature raglan sleeves. Who is this for/type of workout: versatile performance for any workout, fit and feel: clean, modern fit and design. Body width: 23.5", Body length: 29.5" (size large).

010 Black/(White)	060 Anthracite/(White)	341 Dark Green/(White)
419 Navy/(White)	493 Royal/(White)	545 Purple/(White)
610 Cardinal/(White)	657 Scarlet/(White)	669 Dark Maroon/(White)



**NIKE THERMA PANT 867304 \$71.50** 

**SIZES:** S, M, L, XL, 2XL, 3XL, 4XL **FABRIC:** 100% polyester.

**OFFER DATE:** 07/01/17 **END DATE:** 07/01/19

Key technology: Dri-FIT and Thermo-FIT fabric. Key features: Clean, modern fit and design with solid Swoosh design trademark screen print. What's new and improved: New fabric is 15% warmer and has 40% less wind chill than prior ko fabric. Updated, modern design lines. Who is this for/type of workout: Versatile performance for any workout. Fit and feel: Clean, modern fit and design. Hip width: 23", Inseam length: 31.25" (size large).

010 Black/(White)	060 Anthracite/(White)	341 Dark Green/(White)
419 Navy/(White)	493 Royal/(White)	545 Purple/(White)
610 Cardinal/(White)	657 Scarlet/(White)	669 Dark Maroon/(White)





**NIKE CLUB FLEECE PULLOVER HOODIE 835585 \$58.50** 

**SIZES:** S, M, L, XL, 2XL, 3XL, 4XL, ST, MT, LT, XLT, 2XLT, 3XLT, 4XLT **FABRIC:** 81% cotton/19% polyester.

**OFFER DATE:** 04/01/17 **END DATE:** 04/01/20

Long sleeve brushback pullover with 3 piece hood with drawcord. Back neck tape. Embroidered Swoosh design trademark at right chest. New plush loopback fleece, updated saddle stitching, reduced hem and cuff height. Body width: 24", Body length: 27.75" (size large). Tall body and sleeve length: +2.375" (all sizes).

010 Black/(White)	060 Anthracite/(White)	063 Dark Grey Heather/(White)
100 White/(Black)	249 Brown/(White)	315 Kelly Green/(White)
341 Dark Green/(White)	419 Navy/(White)	448 Light Blue/(White)
493 Royal/(White)	545 Purple/(White)	610 Cardinal/(White)
657 Scarlet/(White)	669 Dark Maroon/(White)	716 Bright Gold/(Black)
783 Vegas Gold/(Black)	802 Desert Orange/(White)	820 Orange/(White)

**Y** Youth #836308-010, 060, 063, 419, 493, 657 / S-XL / **\$52.00** / Body width: 17.25", Body length: 21.5" (size medium)



## NIKE CLUB FLEECE CREW 835589 \$52.00

**SIZES:** S, M, L, XL, 2XL, 3XL, 4XL, ST, MT, LT, XLT, 2XLT, 3XLT, 4XLT **FABRIC:** 81% cotton/19% polyester.

**OFFER DATE:** 04/01/17 **END DATE:** 04/01/20

Long sleeve brushback fleece crew. Back neck tape. Embroidered Swoosh design trademark logo at right chest. New plush brushback fleece, updated saddle stitching, reduced hem and cuff height. Body width: 24", Body length: 28.25" (size large). Tall body and sleeve length: +2.375" (all sizes).

010 Black/(White)	060 Anthracite/(White)	063 Dark Grey Heather/(White)
100 White/(Black)	341 Dark Green/(White)	419 Navy/(White)
493 Royal/(White)	545 Purple/(White)	610 Cardinal/(White)
657 Scarlet/(White)	669 Dark Maroon/(White)	



## NIKE CLUB FLEECE PANT 835590 \$58.50

**SIZES:** S, M, L, XL, 2XL, 3XL, 4XL, ST, MT, LT, XLT, 2XLT, 3XLT, 4XLT **FABRIC:** 81% cotton/19% polyester.

**OFFER DATE:** 04/01/17 **END DATE:** 04/01/20

Brushback fleece open hem pant with external drawcord. Back welt pocket. Side seam pockets. New plush loopback fleece, updated saddle stitching. Hip width: 22", Inseam length: 24.25" (size large). Tall inseam length: +2.375" (all sizes).

010 Black/(White)	060 Anthracite/(White)	063 Dark Grey Heather/(White)
100 White/(Black)	341 Dark Green/(White)	419 Navy/(White)
493 Royal/(White)	545 Purple/(White)	610 Cardinal/(White)
657 Scarlet/(White)	669 Dark Maroon/(White)	

**Y** Youth #836309-010, 060, 063, 419, 493, 657 / S-XL / \$52.00 / Hip width: 15.75", Inseam length: 17.5" (size medium)





**NEW NIKE TEAM DOWN FILL PARKA 915036 \$312.00** 

**SIZES:** XXS, S, M, L, XL, 2XL, 3XL, 4XL **FABRIC:** 100% polyester.

**OFFER DATE:** 04/01/17 **END DATE:** 04/01/20

Stay warm, dry, and protected, the 550 down parka is completely integrated with Storm-FIT shell for maximum protection in the elements. Proven winner in the coldest of elements and on the sideline. Seam sealed full front zipper with hidden side zippered pockets. Body width: 27", Body length: 34.5" (size large).

010 Black/(White)

060 Anthracite/(White)

419 Navy/(White)



**NIKE ALLIANCE PARKA II 658081 \$260.00** 

**SIZES:** XS, S, M, L, XL, 2XL, 3XL **FABRIC:** 100% polyester.

**OFFER DATE:** 04/01/15 **END DATE:** 04/01/18

Be prepared for the elements with the Nike Alliance Parka II. 240G poly fill. Storm-FIT 1, full zip jacket that is fleece lined and has three front zippered pockets. There is adjustability at sleeve cuffs and hems as well as a removeable hood, chinguard/draft flap and articulated elbows. Swoosh design trademark at upper right chest. Body width: 26", Body length: 34.25" (size large).

020 Black/Anthracite/(White)

060 Anthracite/Anthracite/(White)

418 Navy/Anthracite/(White)



**NIKE SPHERE HYBRID JACKET 658084 \$188.50** 

**SIZES:** S, M, L, XL, 2XL, 3XL **FABRIC:** 100% polyester.

**OFFER DATE:** 04/01/15 **END DATE:** 04/01/18

Use for those late season games, when the sun goes down and stadium lights turn on. This Dri-FIT jacket will keep you warm and protected, with Nike sphere technology and a water resistant shell. Embroidered Swoosh design trademark at right chest. Body width: 23.75", Body length: 29" (size large).

010 Black/(White)

060 Anthracite/(White)

419 Navy/(White)

493 Royal/(White)

657 Scarlet/(White)



**NIKE STORM-FIT DUGOUT JACKET II 708184 \$156.00 **

**SIZES:** S, M, L, XL, 2XL, 3XL **FABRIC:** 100% polyester.

**OFFER DATE:** 10/01/15 **END DATE:** 10/01/18

Weather-resistant Storm-FIT full-zip hooded jacket features brushed liner and polyfill for warmth. Elastic bungees at hood and waist, and sleeve gator at cuffs for added comfort and protection from the elements. Zippered pockets and dual-entry front zipper. Body width: 25", Body length: 30.25" (size large).

- |                   |                        |                  |
|-------------------|------------------------|------------------|
| 010 Black/(White) | 060 Anthracite/(White) | 419 Navy/(White) |
| 493 Royal/(White) | 657 Scarlet/(White)    |                  |



**NIKE STOCK WOVEN 1/4 ZIP JACKET 707185 \$104.00 **

**SIZES:** XS, S, M, L, XL, 2XL, 3XL **FABRIC:** 100% polyester.

**OFFER DATE:** 10/01/15 **END DATE:** 10/01/18

Woven DWR finish quarter-zip pullover jacket featuring a hood and drop-tail for extra protection from the elements. Easy access to vented back with updated underarm gusset and side panel for great color blocking option. Dual purpose front pocket. Body width: 23.75", Body length: 32.25" (size large).

- |                              |                             |                          |
|------------------------------|-----------------------------|--------------------------|
| 020 Black/(Anthracite)       | 361 Dark Green/(Anthracite) | 418 Navy/(Anthracite)    |
| 468 Royal/(Anthracite)       | 552 Purple/(Anthracite)     | 656 Scarlet/(Anthracite) |
| 691 Dark Maroon/(Anthracite) | 693 Cardinal/(Anthracite)   |                          |



**NIKE 3/4 SLEEVE HOT JACKET 897383 \$110.50 **

**SIZES:** XS, S, M, L, XL, 2XL, 3XL **FABRIC:** 100% polyester.

**OFFER DATE:** 10/01/17 **END DATE:** 10/01/20

Lightweight weather-resistant training and warmup jacket with "home plate" v-neck, and 3/4 sleeves as preferred by showcase baseball players. De-coupled shoulder seams provide enhanced freedom of movement as well as ventilation with perforated fabric underneath upper back yoke, at sleeves and underarms. Zippered dual-entry kangaroo pocket. Swoosh design trademark at right chest. Body width: 22.75", Body length: 29.75" (size large).

010 Black/(White)	060 Anthracite/(White)	100 White/(Black)
341 Dark Green/(White)	419 Navy/(White)	493 Royal/(White)
545 Purple/(White)	610 Cardinal/(White)	657 Scarlet/(White)
669 Dark Maroon/(White)		



**NIKE SHORT-SLEEVE HOT JACKET 715061 \$78.00 **

**SIZES:** S, M, L, XL, 2XL, 3XL **FABRIC:** 100% polyester.

**OFFER DATE:** 10/01/15 **END DATE:** 10/01/18

Versatile short-sleeve lightweight jacket with one-snap modified v-neck placket, zippered kangaroo pocket, and bungees at the waist. Body width: 23.25", Body length: 28.75" (size large).

010 Black/(White)	060 Anthracite/Black/(White)	100 White/Anthracite/(Anthracite)
341 Dark Green/Anthracite/(White)	419 Navy/Anthracite/(White)	493 Royal/Anthracite/(White)
545 Purple/Anthracite/(White)	610 Cardinal/Anthracite/(White)	657 Scarlet/Anthracite/(White)
669 Dark Maroon/Anthracite/(White)		



**NEW NIKE STOCK EARLY SEASON POLO 909554 \$78.00** 

**SIZES:** S, M, L, XL, 2XL, 3XL, 4XL **FABRIC:** 100% polyester.

**OFFER DATE:** 04/01/18 **END DATE:** 04/01/19

This classic polo offers Dri-FIT technology to keep you cool and dry. Elevated polo with print on sleeves. Swoosh design trademark at right chest. Body width: 22.75", Body length: 30.25" (size large).

- |                          |                          |                            |
|--------------------------|--------------------------|----------------------------|
| 010 Black/(White)        | 100 White/(Black)        | 341 Gorge Green/(White)    |
| 419 College Navy/(White) | 493 Game Royal/(White)   | 545 Court Purple/(White)   |
| 610 Team Maroon/(White)  | 613 Team Crimson/(White) | 657 University Red/(White) |
| 669 Deep Maroon/(White)  |                          |                            |





**NEW NIKE LS POLO 908413 \$58.50** 

**SIZES:** S, M, L, XL, 2XL, 3XL **FABRIC:** 100% polyester.

**OFFER DATE:** 04/01/18 **END DATE:** 04/01/20

This long-sleeve polo has a Dri-FIT double knit flat back mesh body fabric with self collar. Contrast mesh insets at shoulder, collar and side seam. 3 Button front placket. Embroidered Swoosh design trademark at right chest. Body width: 22.75", body length: 30.25" (size large).

- |                            |                           |                          |
|----------------------------|---------------------------|--------------------------|
| 010 Black/(White)          | 060 Anthracite/(White)    | 100 White/(Black)        |
| 249 Dark Cinder/(White)    | 315 Apple Green/(White)   | 341 Gorge Green/(White)  |
| 419 College Navy/(White)   | 448 Valor Blue/(White)    | 493 Game Royal/(White)   |
| 545 Court Purple/(White)   | 610 Team Maroon/(White)   | 613 Team Crimson/(White) |
| 657 University Red/(White) | 669 Deep Maroon/(White)   | 716 Sundown/(White)      |
| 783 Team Gold/(White)      | 802 Desert Orange/(White) | 820 Team Orange/(White)  |





**NEW NIKE SS POLO 908414 \$52.00** 

**SIZES:** S, M, L, XL, 2XL, 3XL, 4XL **FABRIC:** 100% polyester.

**OFFER DATE:** 04/01/18 **END DATE:** 04/01/20

This short sleeve polo has a Dri-FIT double knit flat back mesh body fabric with self collar. Contrast mesh insets at shoulder, collar and side seam. 3 Button front placket. Embroidered Swoosh design trademark at right chest. Body width: 2275", Body length: 30.25" (size large).

- |                            |                           |                          |
|----------------------------|---------------------------|--------------------------|
| 010 Black/(White)          | 060 Anthracite/(White)    | 100 White/(Black)        |
| 249 Dark Cinder/(White)    | 315 Apple Green/(White)   | 341 Gorge Green/(White)  |
| 419 College Navy/(White)   | 448 Valor Blue/(White)    | 493 Game Royal/(White)   |
| 545 Court Purple/(White)   | 610 Team Maroon/(White)   | 613 Team Crimson/(White) |
| 657 University Red/(White) | 669 Deep Maroon/(White)   | 716 Sundown/(White)      |
| 783 Team Gold/(White)      | 802 Desert Orange/(White) | 820 Team Orange/(White)  |



**NIKE STOCK EARLY SEASON POLO 845840 \$78.00** 

**SIZES:** S, M, L, XL, 2XL, 3XL, 4XL **FABRIC:** 100% polyester.

**OFFER DATE:** 04/01/17 **END DATE:** 04/01/18

This classic polo offers Dri-FIT technology to keep you cool and dry. Elevated polo with print on sleeves. Swoosh design trademark at right chest. Body width: 22.75", Body length: 30.25" (size large).

010 Black/White/Grey(White)

100 White/Black/Grey(White)

341 Gorge Green/White/Grey(White)

419 Navy/White/Grey(White)

480 Royal/White/Grey(White)

547 Purple/White/Grey(White)

657 University Red/White/Grey(White)

669 Deep Maroon/White/Grey(White)

692 Team Maroon/White/Grey(White)



**NIKE STOCK TEAM ISSUE POLO 845841 \$71.50 **

**SIZES:** S, M, L, XL, 2XL, 3XL, 4XL **FABRIC:** 100% polyester.

**OFFER DATE:** 04/01/17 **END DATE:** 04/01/20

This classic polo offers Dri-FIT technology to keep you cool and dry. Elevated polo with fabric mixing at sleeves. Swoosh design trademark at right chest. Body width: 22.75", Body length: 30.25" (size large).

010 Black/White/(White)

100 White/Black/(Black)

341 Gorge Green/White/(White)

419 Navy/White/(White)

480 Royal/White/(White)

547 Purple/White/(White)

657 University Red/White/(White)

669 Deep Maroon/White/(White)

692 Team Maroon/White/(White)



**NIKE TEAM GAMEDAY POLO 658085 \$52.00 **

**SIZES:** S, M, L, XL, 2XL, 3XL, 4XL **FABRIC:** 100% polyester.

**OFFER DATE:** 04/01/15 **END DATE:** 04/01/18

This short sleeve polo has a Dri-FIT double knit flat back mesh body fabric with self collar. Contrast mesh insets at shoulder, collar and side seam. 3 Button front placket. Embroidered Swoosh design trademark at right chest. Body width: 23.5", Body length: 31" (size large).

- |                              |                                 |                               |
|------------------------------|---------------------------------|-------------------------------|
| 012 Black/White/(White)      | 061 Anthracite/White/(White)    | 106 White/Black/(Black)       |
| 257 Brown/White/(White)      | 316 Kelly Green/White/(White)   | 342 Dark Green/White/(White)  |
| 420 Navy/White/(White)       | 453 Light Blue/White/(White)    | 494 Royal/White/(White)       |
| 546 Purple/White/(White)     | 612 Cardinal/White/(White)      | 620 Vivid Pink/White/(White)  |
| 658 Scarlet/White/(White)    | 670 Dark Maroon/White/(White)   | 717 Bright Gold/White/(White) |
| 784 Vegas Gold/White/(White) | 803 Desert Orange/White/(White) | 821 Orange/White/(White)      |



**NIKE TEAM L/S GAMEDAY POLO 728037 \$58.50** 

**SIZES:** S, M, L, XL, 2XL, 3XL **FABRIC:** 100% polyester.

**OFFER DATE:** 01/01/16 **END DATE:** 04/01/18

This long-sleeve polo has a Dri-FIT double knit flat back mesh body fabric with self collar. Contrast mesh insets at shoulder, collar and side seam. 3 Button front placket. Embroidered Swoosh design trademark at right chest. Body width: 23.5", body length: 31" (size large).

012 Black/White/(White)

061 Anthracite/White/(White)

100 White/Black/(Black)

420 Navy/White/(White)

494 Royal/White/(White)

658 Scarlet/White/(White)



**NIKE FLAT FRONT TECH PANT 835593 \$110.50** 

**SIZES:** 30, 32, 34, 36, 38, 40, 42, 44 **FABRIC:** 95% polyester/5% spandex.

**OFFER DATE:** 04/01/17 **END DATE:** 01/01/19

Dri-FIT coaches pant with lightweight fabrication. Flat front, front pockets and two set-back pockets with tonal Swoosh design trademark located at upper right back pocket. Hip width: 22.75" (size 36), Inseam length: 36" (all sizes).

010 Black/(Black)

221 Chino/(Chino)





**NIKE DRY HYPER SS TOP 840172 \$45.50** 

**SIZES:** S, M, L, XL, 2XL, 3XL, 4XL **FABRIC:** 100% polyester.

**OFFER DATE:** 01/01/17 **END DATE:** 01/01/19

Dri-FIT soft, heather material for heritage gym look and feel, sueded material doesn't cling when wet, wrapped design lines to the body in motion tailored to the body in motion high intensity training. Body width: 22", body length: 29.5" (Size large).

- 
- |                        |                             |                   |
|------------------------|-----------------------------|-------------------|
| 010 Black/(White)      | 057 Dark Steel Grey/(White) | 100 White/(Black) |
| 341 Dark Green/(White) | 419 Navy/(White)            | 493 Royal/(White) |
| 657 Scarlet/(White)    |                             |                   |



**NIKE TEAM LEGEND LONG-SLEEVE CREW 727980 \$39.00** 

**SIZES:** S, M, L, XL, 2XL, 3XL, 4XL **FABRIC:** Body: 100% polyester.

**OFFER DATE:** 04/01/16 **END DATE:** 04/01/20

Dri-FIT fabric wicks away sweat to help keep you comfortable and dry. Long-sleeve construction is ideal for a variety of training conditions. Neck tape added for durability and comfort. Swoosh design trademark at upper left chest. Body width: 22.75", Body length: 29.25" (size large).

**Part of Tee/Fleece Embellishment Program.**

- |                                   |                               |                                |
|-----------------------------------|-------------------------------|--------------------------------|
| 010 Black/(Cool Grey)             | 091 Carbon Heather/(Black)    | 100 White/(Cool Grey)          |
| 249 Dark Cinder/(Cool Grey)       | 315 Apple Green/(Cool Grey)   | 341 Gorge Green/(Cool Grey)    |
| 419 College Navy/(Cool Grey)      | 448 Valor Blue/(Cool Grey)    | 493 Game Royal/(Cool Grey)     |
| 545 Court Purple/(Cool Grey)      | 610 Team Maroon/(Cool Grey)   | 657 University Red/(Cool Grey) |
| 669 Deep Maroon/(Cool Grey)       | 698 Team Crimson/(Cool Grey)  | 727 Sundown/(Black)            |
| 783 Team Gold/(Cool Grey)         | 802 Desert Orange/(Cool Grey) | 873 Bright Ceramic/(Cool Grey) |
| 888 University Orange/(Cool Grey) |                               |                                |

**Y Youth #840177-010, 091, 100, 419, 493, 657 / S-XL / \$32.50 / Body width: 16", Body length: 21.5" (size medium)**



## NIKE TEAM LEGEND S/S CREW 727982 \$32.50

**SIZES:** S, M, L, XL, 2XL, 3XL, 4XL **FABRIC:** Body: 100% polyester.

**OFFER DATE:** 04/01/16 **END DATE:** 04/01/20

Dri-FIT fabric wicks away sweat to help keep you comfortable and dry. Short-sleeve construction is ideal for a variety of training conditions. Neck tape added for durability and comfort. Swoosh design trademark at upper left chest. Body width: 22.75", Body length: 29.25" (size large).

**Part of Tee/Fleece Embellishment Program.**

010 Black/(Cool Grey)	091 Carbon Heather/(Black)	100 White/(Cool Grey)
249 Dark Cinder/(Cool Grey)	315 Apple Green/(Cool Grey)	341 Gorge Green/(Cool Grey)
419 College Navy/(Cool Grey)	448 Valor Blue/(Cool Grey)	493 Game Royal/(Cool Grey)
545 Court Purple/(Cool Grey)	610 Team Maroon/(Cool Grey)	657 University Red/(Cool Grey)
669 Deep Maroon/(Cool Grey)	698 Team Crimson/(Cool Grey)	727 Sundown/(Black)
783 Team Gold/(Black)	802 Desert Orange/(Cool Grey)	873 Bright Ceramic/(Cool Grey)
888 University Orange/(Cool Grey)		

**Y**Youth #840178 / S-XL / \$26.00 / Body width: 16", Body length: 21.5" (size medium)



## NIKE TEAM LEGEND SLEEVELESS CREW 727981 \$32.50

**SIZES:** S, M, L, XL, 2XL, 3XL, 4XL **FABRIC:** Body: 100% polyester.

**OFFER DATE:** 04/01/16 **END DATE:** 04/01/20

Dri-FIT fabric wicks away sweat to help keep you comfortable and dry. Sleeveless construction is ideal for a variety of training conditions. Neck tape added for durability and comfort. Swoosh design trademark at upper left chest. Body width: 22.75", Body length: 29.25" (size large).

**Part of Tee/Fleece Embellishment Program.**

010 Black/(Cool Grey)	091 Carbon Heather/(Black)	100 White/(Cool Grey)
341 Gorge Green/(Cool Grey)	419 College Navy/(Cool Grey)	493 Game Royal/(Cool Grey)
545 Court Purple/(Cool Grey)	610 Team Maroon/(Cool Grey)	657 University Red/(Cool Grey)
669 Deep Maroon/(Cool Grey)		



**NIKE CORE LONG SLEEVE COTTON CREW 716185 \$23.40** 

**SIZES:** S, M, L, XL, 2XL, 3XL **FABRIC:** 100% cotton for white and color; 80% cotton/20% polyester for grey heather.

**OFFER DATE:** 01/01/15 **END DATE:** 04/01/20

Combed, ring-spun short sleeve tee with reinforced neck and a premium feel. Body width: 19.25", Body length: 25.5" (size medium).

**Part of Tee/Fleece Embellishment Program.**

010 Black	075 Grey Heather	100 White
341 Noble Green	419 College Navy	448 Valor Blue
493 Game Royal	545 New Orchid	610 Team Maroon
613 Team Crimson	657 Univesity Red	669 Deep Maroon
716 University Gold	783 Team Gold	



**NIKE CORE SHORT SLEEVE COTTON CREW**

**716186 \$19.50** 

**SIZES:** S, M, L, XL, 2XL, 3XL **FABRIC:** 100% cotton for white and color; 80% cotton/20% polyester for grey heather.

**OFFER DATE:** 01/01/15 **END DATE:** 04/01/20

Combed, ring-spun short sleeve tee with reinforced neck and a premium feel. Body width: 00", Body length: 00" (size large).

**Part of Tee/Fleece Embellishment Program.**

010 Black	075 Grey Heather	100 White
315 Apple Green	341 Noble Green	419 College Navy
448 Valor Blue	493 Game Royal	545 New Orchid
610 Team Maroon	613 Team Crimson	657 Univesity Red
669 Deep Maroon	716 University Gold	783 Team Gold
820 Team Orange	873 Bright Ceramic	



**Y Youth #748854-010, 075, 100, 419, 493, 657 / S-XL / \$14.30 / Body width: 00", Body length: 00" (size medium)**



**NIKE WOVEN PRACTICE SHORT 719907 \$49.40** 

**SIZES:** S, M, L, XL, 2XL, 3XL, 4XL **FABRIC:** 100% polyester.

**OFFER DATE:** 01/01/16 **END DATE:** 01/01/18

The ideal practice short focused on durability, lightweight performance, ventilation, and fit. Lightweight, durable Dri-FIT woven fabric ideal to prevent water absorption and damage on contact. Fit to the exact specifications of our championship athletes – it has a 10.5" inseam to prevent distraction at the knee but has a longer outseam which allows for better range of motion in the hips. Lightweight, stretch mesh side panels provide high coverage ventilation for better cooling and exhaust and also provide total range of motion for the athlete. #4 Swoosh design trademark at left leg hem. Hip width: 25" (size large), Inseam length: 10.5" (all sizes).

010 Black/White/(White)	061 Anthracite/White/(White)	100 White/White/(Black)
342 Dark Green/White/(White)	420 Navy/White/(White)	494 Royal/White/(White)
546 Purple/White/(White)	612 Cardinal/White/(White)	658 Scarlet/White/(White)
670 Dark Maroon/White/(White)		



**NEW NIKE STOCK WOVEN DRY UNTOUCHABLE SHORT 889167 \$52.00** 

**SIZES:** S, M, L, XL, 2XL, 3XL **FABRIC:** 100% polyester.

**OFFER DATE:** 01/01/18 **END DATE:** 04/01/21

Designed for the player during practice and pregame. Features a color pop piping around the hem of the short, and white screen print Swoosh design trademark. Comfortable stretch woven designed for improved movement. Hip width: 23.75" (size large), Inseam length: 9.25" (all sizes).

010 Black/(White)	060 Anthracite/(White)	100 White/(Black)
341 Dark Green/(White)	419 Navy/(White)	493 Royal/(White)
545 Purple/(White)	610 Cardinal/(White)	657 Scarlet/(White)
669 Dark Maroon/(White)		





**NIKE 2 POCKET FLY SHORT 728233 \$45.50** 

**SIZES:** S, M, L, XL, 2XL, 3XL, 4XL **FABRIC:** 100% polyester.

**OFFER DATE:** 04/01/16 **END DATE:** 04/01/19

Key technology: Dri-FIT fabric, key features: motion vent for ease of movement, what's new and improved: new rectangular action gusset and motion vent at hem for the body in motion, who is this for/type of workout: training, fit and feel: standard. Hip width: 23.25" (size large), Inseam length: 9" (all sizes).

010 Black/(White)	060 Anthracite/(White)	249 Brown/(White)
315 Kelly Green/(White)	341 Dark Green/(White)	419 Navy/(White)
448 Light Blue/(White)	493 Royal/(White)	545 Purple/(White)
610 Cardinal/(White)	613 Crimson/(White)	657 Scarlet/(White)
669 Dark Maroon/(White)	716 Bright Gold/(Black)	783 Vegas Gold/(Black)
802 Desert Orange/(White)	820 Orange/(White)	873 Bright Ceramic/(White)



**NIKE TEAM FLY SHORT 728220 \$39.00** 

**SIZES:** S, M, L, XL, 2XL, 3XL, 4XL **FABRIC:** 100% polyester.

**OFFER DATE:** 04/01/16 **END DATE:** 04/01/19

Key technology: Dri-FIT fabric, key features: motion vent for ease of movement, what's new and improved: new rectangular action gusset and motion vent at hem for the body in motion, who is this for/type of workout: training, fit and feel: standard. Hip width: 23.25" (size large), Inseam length: 9" (all sizes).

010 Black/(White)	060 Anthracite/(White)	341 Dark Green/(White)
419 Navy/(White)	493 Royal/(White)	545 Purple/(White)
610 Cardinal/(White)	657 Scarlet/(White)	669 Dark Maroon/(White)

**Y Youth #728203-010, 060, 341, 419, 493, 610, 657, 669 / S-XL / \$36.40 / Hip width: 17.5", Inseam length: 8.5" (size medium)**



## JORDAN FLIGHT TEAM JACKET 696736 \$117.00

**SIZES:** XS, S, M, L, XL, 2XL, 3XL, 4XL, LT, XLT, 2XLT, 3XLT, 4XLT **FABRIC:** 100% polyester.

**OFFER DATE:** 07/01/15 **END DATE:** 07/01/18

Moisture-wicking 210G 100% polyester knit jacket. Lightweight moisture-wicking knit provides ultimate comfort and mobility when warming up for the big game. Body width: 23.25", Body length: 29" (size large). Tall body length: +2.375" (all sizes). Tall sleeve length: +2.375" (all sizes).

---

010 Black/White/(White)	065 Cool Grey/White/(White)	419 Navy/White/(White)
493 Royal/White/(White)	657 Scarlet/White/(White)	



## JORDAN FLIGHT TEAM PANT 696734 \$104.00

**SIZES:** XS, S, M, L, XL, 2XL, 3XL, 4XL, LT, XLT, 2XLT, 3XLT, 4XLT **FABRIC:** 100% polyester.

**OFFER DATE:** 07/01/15 **END DATE:** 07/01/18

Moisture-wicking 210G 100% polyester knit pant. Lightweight moisture-wicking knit provides ultimate comfort and mobility when warming up for the big game. Hip width: 22.75", Inseam length: 31" (size large). Tall inseam length: +2.375" (all sizes).

---

010 Black/White/(White)	065 Cool Grey/White/(White)	419 Navy/White/(White)
493 Royal/White/(White)	657 Scarlet/White/(White)	



## JORDAN 360 TEAM HOODIE 865860 \$84.50

**SIZES:** XS, S, M, L, XL, 2XL, 3XL, 4XL **FABRIC:** 100% polyester.

**OFFER DATE:** 07/01/17 **END DATE:** 07/01/19

Therma fleece keeps you warm, dry and insulated. Streamlined hood with draw cords for a personalized fit. Strategically placed seams for maximum comfort. #5 Jumpman logo is located on the lower left arm sleeve. Body width: 22.75", Body length: 28.25" (size large).

---

010 Black/(White)	060 Anthracite/(White)	341 Dark Green/(White)
377 Kelly Green/(White)	419 Navy/(White)	493 Royal/(White)
545 Purple/(White)	610 Cardinal/(White)	657 Scarlet/(White)
669 Dark Maroon/(White)		



## JORDAN 360 TEAM PANT 865866 \$78.00

**SIZES:** XS, S, M, L, XL, 2XL, 3XL, 4XL **FABRIC:** 100% polyester.

**OFFER DATE:** 07/01/17 **END DATE:** 07/01/19

Therma fleece keeps you warm, dry and insulated. Comfortable waist with interior draw cord allows for personalized fit. Full gusset provides full range of motion. Relaxed fit from the knee down for comfort in any activity. Strategically placed seams for maximum comfort. #5 Jumpman left hip. Hip width: 23.5", Inseam length: 29" (size large).

---

010 Black/(White)	060 Anthracite/(White)	341 Dark Green/(White)
377 Kelly Green/(White)	419 Navy/(White)	493 Royal/(White)
545 Purple/(White)	610 Cardinal/(White)	657 Scarlet/(White)
669 Dark Maroon/(White)		



**JORDAN TEAM POLO 865856 \$71.50** 

**SIZES:** XS, S, M, L, XL, 2XL, 3XL, 4XL **FABRIC:** 100% polyester.

**OFFER DATE:** 07/01/17 **END DATE:** 04/01/19

Dri-FIT 100% polyester polo provides zero distraction with articulated design lines for comfort with fabric that keeps you cool and dry. Body width: 23", Body length: 29.5" (size large).

- |                        |                        |                         |
|------------------------|------------------------|-------------------------|
| 010 Black/(White)      | 100 White/(Navy)       | 101 White/(Kelly Green) |
| 105 White/(Scarlet)    | 106 White/(Black)      | 107 White/(Royal)       |
| 108 White/(Dark Green) | 341 Dark Green/(White) | 377 Kelly Green/(White) |
| 419 Navy/(White)       | 493 Royal/(White)      | 657 Scarlet/(White)     |





**JORDAN TEAM ALL SEASON SHORT SLEEVE TOP**  
**872037 \$45.50** 

**SIZES:** XS, S, M, L, XL, 2XL, 3XL, 4XL **FABRIC:** 100% polyester.

**OFFER DATE:** 07/01/17 **END DATE:** 07/01/19

Dri-FIT fabric keeps you cool, dry and comfortable. Bound neck + self interior neck tape provide the ultimate in comfort. Heat transfer Jumpman. Body width: 20.5", Body length: 28.5" (size large).

- 
- |                        |                         |                      |
|------------------------|-------------------------|----------------------|
| 010 Black/(White)      | 060 Anthracite/(White)  | 100 White/(Black)    |
| 341 Dark Green/(White) | 377 Kelly Green/(White) | 419 Navy/(White)     |
| 493 Royal/(White)      | 545 Purple/(White)      | 610 Cardinal/(White) |
| 657 Scarlet/(White)    | 669 Dark Maroon/(White) |                      |



**JORDAN TEAM DRY SHORT 865844 \$58.50**

**SIZES:** XS, S, M, L, XL, 2XL, 3XL, 4XL **FABRIC:** 100% polyester.

**OFFER DATE:** 07/01/17 **END DATE:** 04/01/18

Knit fabric moves where you move. Side split vents for maximum mobility. On seam pockets for easy storage. Ballistic textured Jumpman lower left front hem. Engineered for 7 key movements (push, pull, lunge, rotation, hinge, locomotion, push, squat). Hip width: 23" (size large), Inseam length: 10" (size medium).

- 
- |                      |                        |                         |
|----------------------|------------------------|-------------------------|
| 010 Black/(White)    | 060 Anthracite/(White) | 341 Dark Green/(White)  |
| 419 Navy/(White)     | 493 Royal/(White)      | 545 Purple/(White)      |
| 610 Cardinal/(White) | 657 Scarlet/(White)    | 669 Dark Maroon/(White) |



## JORDAN TEAM FLIGHT ALL SEASON TANK

865864 \$45.50 

**SIZES:** XS, S, M, L, XL, 2XL, 3XL, 4XL **FABRIC:** 84% polyester/16% spandex.

**OFFER DATE:** 07/01/17 **END DATE:** 04/01/19

Considered Dri-FIT 4 way stretch fabric keeps you cool, dry and comfortable. Strategically placed flat-lock seams help eliminate chaffing and seam stacking. Self interior neck tape provides maximum comfort.

Authentic #5 screen print Jumpman. Body width: 16.75", Body length: 26.25" (size large).

010 Black/(White)	060 Anthracite/(White)	100 White/(Black)
341 Dark Green/(White)	377 Kelly Green/(White)	419 Navy/(White)
493 Royal/(White)	545 Purple/(White)	610 Cardinal/(White)
657 Scarlet/(White)	669 Dark Maroon/(White)	



## JORDAN TEAM ALPHA 6" COMPRESSION SHORT

865862 \$45.50 

**SIZES:** XS, S, M, L, XL, 2XL, 3XL, 4XL **FABRIC:** 84% polyester/16% spandex.

**OFFER DATE:** 07/01/17 **END DATE:** 07/01/19

Considered Dri-FIT 4 way stretch fabric keeps you cool, dry and comfortable. Contoured front pouch provides maximum comfort. Strategically placed flat-lock seams help eliminate chaffing and seam stacking. First class Jordan repeat waistband. Authentic #5 screen print Jumpman. Hip width: 15.5", Inseam length: 6" (size large).

010 Black/(White)	060 Anthracite/(White)	100 White/(Black)
341 Dark Green/(White)	377 Kelly Green/(White)	419 Navy/(White)
493 Royal/(White)	545 Purple/(White)	610 Cardinal/(White)
657 Scarlet/(White)	669 Dark Maroon/(White)	



## JORDAN TEAM ALPHA DRY 3/4 TIGHT AJ1910 \$45.50

**SIZES:** XS, S, M, L, XL, 2XL, 3XL, 4XL **FABRIC:** 84% polyester/16% spandex.

**OFFER DATE:** 07/01/17 **END DATE:** 04/01/18

Considered Dri-FIT 4 way stretch fabric keeps you cool, dry and comfortable. Contoured front pouch provides maximum comfort. Strategically placed flat-lock seams help eliminate chaffing and seam stacking. First class Jordan repeat waistband. #5 Jumpman. Hip width: 15.75", Inseam length: 17.75" (size large).

010 Black/(White)	060 Anthracite/(White)	100 White/(Black)
341 Dark Green/(White)	419 Navy/(White)	493 Royal/(White)
545 Purple/(White)	610 Cardinal/(White)	657 Scarlet/(White)
669 Dark Maroon/(White)		



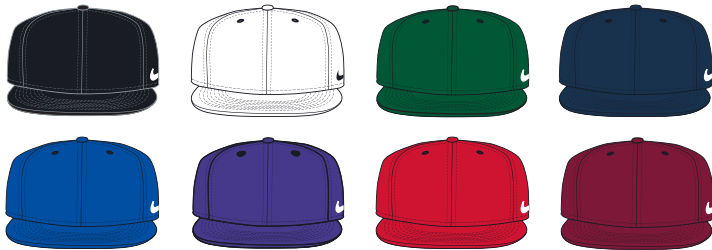


**NIKE STOCK TRUE VAPOR SF CAP 633158 \$32.50**

**SIZES:** S/M, M/L, L/XL

Ultimate performance and comfort in our signature Nike True Silhouette. This structured six panel cap is constructed in Dri-FIT fabric and features a Dri-FIT terry sweatband for excellent moisture management. Our patented vapor bill construction reduces pressure against your forehead and reduces weight providing unmatched comfort. The back four panels are laser perforated to increase ventilation and reduce weight. This Swoosh flex cap stretches to accommodate a variety of sizes.

- |                   |                     |                  |
|-------------------|---------------------|------------------|
| 010 Black/(White) | 100 White/(Black)   | 419 Navy/(White) |
| 493 Royal/(White) | 657 Scarlet/(White) |                  |



**NIKE STOCK TRUE SWOOSH FLEX CAP 384409 \$26.00**

**SIZES:** S/M, M/L, L/XL

Our signature Nike True Silhouette, six-panel cap offers heavy buckram, flat bill, Dri-FIT fabric, Dri-FIT Swoosh flex sweatband and embroidered eyelets.

- |                            |                         |                          |
|----------------------------|-------------------------|--------------------------|
| 010 Black/(White)          | 100 White/(Black)       | 342 Gorge Green/(White)  |
| 419 College Navy/(White)   | 493 Game Royal/(White)  | 547 Court Purple/(White) |
| 658 University Red/(White) | 692 Team Maroon/(White) |                          |



**NIKE FEATHERLIGHT CAP 746653 \$31.20**

**SIZES:** MISC

Ultimate performance and comfort in our signature Nike True Silhouette. This structured six panel cap is Dri-FIT fabrication in team colors, vapor bill construction, lasered perforated vents, ray fabric sweatband, reflective pull tab, laser cut twill Swoosh design trademark, 1 inch back strap for adjustment.

- |                                    |                                  |                                |
|------------------------------------|----------------------------------|--------------------------------|
| 010 Black/(Black)/(White)          | 062 Anthracite/(Black)/(Black)   | 106 White/(Black)/(Black)      |
| 343 Gorge Green/(Black)/(Black)    | 427 College Navy/(Black)/(Black) | 496 Game Royal/(Black)/(Black) |
| 661 University Red/(Black)/(Black) |                                  |                                |



**NIKE TEAM DF SWOOSH FLEX CAP 867308 \$23.40**

**SIZES:** S/M, M/L, L/XL **FIRST OFFER:** 04/01/17

This Swoosh Flex Cap is built in Dri-FIT wool with Classic99 structuring. High density Swoosh design trademark on left side panel. This cap features a Dri-FIT terry sweatband.

- |                          |                          |                            |
|--------------------------|--------------------------|----------------------------|
| 010 Black/(White)        | 060 Anthracite/(White)   | 100 White/(Black)          |
| 341 Gorge Green/(White)  | 419 College Navy/(White) | 493 Game Royal/(White)     |
| 545 Court Purple/(White) | 610 Team Maroon/(White)  | 657 University Red/(White) |





**NIKE STOCK HERITAGE 86 CAP 102699 \$19.50** 

**SIZES:** One Size Fits Most

Our adjustable six-panel Heritage 86 Silhouette is unstructured with washed cotton, 40 mm bill curve, embroidered eyelets and a totally clean finish closure.

- |                      |                        |                        |
|----------------------|------------------------|------------------------|
| 010 Black/(White)    | 060 Anthracite/(White) | 100 White/(Black)      |
| 208 Birch/(White)    | 221 Chino/(White)      | 341 Dark Green/(White) |
| 419 Navy/(White)     | 494 Royal/(White)      | 545 Purple/(White)     |
| 610 Cardinal/(White) | 658 Scarlet/(White)    |                        |



**NIKE STOCK CLASSIC VISOR 102700 \$19.50** 

**SIZES:** One Size Fits Most

Three-panel construction, structured cotton visor with hook and loop closure and 40mm bill curve.

- |                     |                        |                      |
|---------------------|------------------------|----------------------|
| 010 Black/(White)   | 060 Anthracite/(White) | 100 White/(Black)    |
| 217 Chino/(White)   | 341 Dark Green/(White) | 419 Navy/(White)     |
| 494 Royal/(White)   | 545 Purple/(White)     | 610 Cardinal/(White) |
| 658 Scarlet/(White) |                        |                      |



**NIKE TEAM SIDELINE BEANIE 867309 \$18.20** 

**SIZES:** Misc **FIRST OFFER:** 4/1

Seasonal Nike Dri-FIT cuffed beanie with high density embroidered Swoosh design trademark at center front.

- |                            |                          |                         |
|----------------------------|--------------------------|-------------------------|
| 010 Black/(White)          | 060 Anthracite/(White)   | 082 Medium Grey/(White) |
| 341 Gorge Green/(White)    | 419 College Navy/(White) | 493 Game Royal/(White)  |
| 657 University Red/(White) |                          |                         |



**NIKE AIR ZOOM PEGASUS 34 TB**

**887009 \$143.00**

**SIZES:** 6-13, 14, 15 **OFFER DATE:** 4/1/17

**The perfect running shoe with a responsive ride to go the distance.**

**UPPER:** Engineered mesh provides support and breathability and provides a great fit, while dynamic Nike Flywire locks down the midfoot for support.

**MIDSOLE:** Zoom Air in the heel and forefoot combined with cushion foam provide a firm yet cushioned and responsive ride.

**OUTSOLE:** Lateral crash rail provides a smooth transition for all types of foot strike while horizontal lugs with perforated perimeter enhance cushioning.

**001** Black/White-Dark Grey

**002** Pure Platinum/White-Black

**100** White/Black

**401** Midnight Navy/White-Black



**NEW NIKE AIR ZOOM PEGASUS 35 TB**

**AO3905 \$156.00**

**SIZES:** 6-13, 14, 15 **OFFER DATE:** 6/1/18

**The perfect running shoe with a responsive ride to go the distance.**

**UPPER:** Engineered mesh provides support and breathability and provides a great fit, while dynamic Nike Flywire locks down the midfoot for support.

**MIDSOLE:** Zoom Air in the heel and forefoot combined with cushion foam provide a firm yet cushioned and responsive ride.

**OUTSOLE:** Lateral crash rail provides a smooth transition for all types of foot strike while horizontal lugs with perforated perimeter enhance cushioning.

**001** Black/White-Gunsmoke-Oil Grey

**002** Pure Platinum/White-Wolf Grey-Cool Grey-Black

**100** White/Black-Pure Platinum-Wolf Grey

**301** Gorge Green/White-Black-Pine Green

**401** Midnight Navy/White-Black

**402** Game Royal/White-Deep Royal Blue-Black

**501** Court Purple/White-Purple Dynasty-Black

**601** Univ Red/White-Tough Red-Black

**602** Team Red/White-Burgundy Ash-Black

**801** Team Orange/White-Mars Stone-Black



**NIKE BRASILIA LARGE DUFFEL**  
**BA5333 \$71.50**

**SIZES:** Misc **OFFER DATE:** 01/01/17 **END DATE:** 01/01/20

Tough 600D polyester • Durable 300D polyester • Detachable shoulder strap  
 • Ventilated shoe or wet/dry storage • Secure zip pocket • Limited lifetime guarantee  
 • Screened Swoosh design trademark

**DIMENSIONS:** 28" L x 12" W x 14" H

010 Black/Black/(White)      064 Flint Grey/Black/(White)



**NIKE BRASILIA MEDIUM DUFFEL**  
**BA5334 \$58.50**

**SIZES:** Misc **OFFER DATE:** 01/01/17 **END DATE:** 01/01/20

Tough 600D polyester • Durable 300D polyester • Detachable shoulder strap  
 • Ventilated shoe or wet/dry storage • Secure zip pocket • Limited lifetime guarantee  
 • Screened Swoosh design trademark

**DIMENSIONS:** 24" L x 11" W x 13" H

010 Black/Black/(White)      064 Flint Grey/Black/(White)  
 333 Gorge Green/Black/(White)      410 Midnight Navy/Black/(White)  
 435 Lt Photo Blue/Black/(White)      480 Game Royal/Black/(White)  
 547 Team Purple/Black/(White)      657 University Red/Black/(White)  
 669 Deep Maroon/Black/(White)      891 Team Orange/Black/(White)



**NIKE BRASILIA SMALL DUFFEL**  
**BA5335 \$52.00**

**SIZES:** Misc **OFFER DATE:** 01/01/17 **END DATE:** 01/01/20

Tough 600D polyester • Durable 300D polyester • Detachable shoulder strap  
 • Ventilated shoe or wet/dry storage • Secure zip pocket • Limited lifetime guarantee  
 • Screened Swoosh design trademark

**DIMENSIONS:** 20" L x 10" W x 11" H

010 Black/Black/(White)      064 Flint Grey/Black/(White)  
 410 Midnight Navy/Black/(White)      480 Game Royal/Black/(White)  
 657 University Red/Black/(White)



**NIKE BRASILIA BACKPACK XL**  
**BA5331 \$71.50**

**SIZES:** Misc **OFFER DATE:** 01/01/18

Tough 600D polyester • Durable 300D polyester • Multiple pockets for organization  
 • Water bottle pocket • Screened Swoosh branding

**DIMENSIONS:** 19" H x 13" W x 10.5" D

010 Black/Black/(White)      064 Flint Grey/Black/(White)  
 410 Midnight Navy/Black/(White)      480 Game Royal/Black/(White)  
 657 University Red/Black/(White)



**NIKE BRASILIA GYMSACK** BA5338 **\$20.80**

**SIZES:** Misc **OFFER DATE:** 01/01/18

Tough 600D polyester • Durable 300D polyester • Drawstring closure / Easy access to contents • Screened Swoosh branding

**DIMENSIONS:** 19.5" H x 14.5" W x 3" D

010 Black/Black/(White)      064 Flint Grey/Black/(White)  
 410 Midnight Navy/Black/(White)      480 Game Royal/Black/(White)  
 657 University Red/Black/(White)



**NEW NIKE ACADEMY TEAM BACKPACK**  
**BA5501 \$65.00**

**SIZE:** Misc **OFFER DATE:** 04/01/18 **END DATE:** 04/01/19

Dual zippered main compartment. Separated shoe or wet/dry storage. Multiple pockets for organization. Padded back for additional comfort. Screened Swoosh design trademark. Limited lifetime guarantee.

010 Black/Black/(White)      064 Flint Grey/Black/(White)  
 410 Midnight Navy/Black/(White)      493 Varsity Royal/Black/(White)  
 657 University Red/Black/(White)



**NIKE 3PPK DRI-FIT CUSHION CREW**

**SX4827 \$23.40**

*Orders accepted in increments of 6 PPK units only*

**SIZES:** S, M, L, XL **FABRIC:** 60% polyester/26% nylon/12% cotton/2% spandex.  
**OFFER DATE:** 04/01/17

Cushioned terry foot / Comfort and shock absorption • Dri-FIT fabric / Wicks away moisture to keep feet dry and cool • Arch support / Snug, secure fit • Anatomical left and right / Superior fit and cushioning

**SIZE:** XL sock = M 12-15 shoe size; L sock = M 8-12 shoe size, W 10-13 shoe size; M sock = M 6-8 shoe size, W 6-10 shoe size.

001 Black/(Flint Grey)

101 White/(Flint Grey)



**NIKE 3PPK DRI-FIT CUSHION LOW-CUT**

**SX4829 \$23.40**

*Orders accepted in increments of 6 PPK units only*

**SIZES:** S, M, L, XL **FABRIC:** 60% polyester/26% nylon/12% cotton/2% spandex.  
**OFFER DATE:** 04/01/17

Cushioned terry foot / Comfort and shock absorption • Dri-FIT fabric / Wicks away moisture to keep feet dry and cool • Arch support / Snug, secure fit • Anatomical left and right / Superior fit and cushioning

**SIZE:** XL sock = M 12-15 shoe size; L sock = M 8-12 shoe size, W 10-13 shoe size; M sock = M 6-8 shoe size, W 6-10 shoe size.

001 Black/(Flint Grey)

101 White/(Flint Grey)



**NIKE 3PPK DRI-FIT CUSHION NO SHOW**

**SX4834 \$23.40**

*Orders accepted in increments of 6 PPK units only*

**SIZES:** S, M, L, XL **FABRIC:** 53% polyester/23% nylon/22% cotton/2% spandex.  
**OFFER DATE:** 04/01/17

Cushioned, medium-density padding / Impact absorption • Dri-FIT fabric / Wicks away moisture to keep feet dry and cool • Arch support / Snug, secure fit • Anatomical left and right / Superior fit and cushioning

**SIZE:** XL sock = M 12-15 shoe size; L sock = M 8-12 shoe size, W 10-13 shoe size; M sock = M 6-8 shoe size, W 6-10 shoe size.

001 Black/(Flint Grey)

101 White/(Flint Grey)



**NIKE 3PPK DRI-FIT CUSHION QUARTER**

**SX4835 \$23.40**

*Orders accepted in increments of 6 PPK units only*

**SIZES:** S, M, L, XL **FABRIC:** 53% polyester/23% nylon/22% cotton/2% spandex.  
**OFFER DATE:** 04/01/17

Cushioned, medium-density padding / Impact absorption • Dri-FIT fabric / Wicks away moisture to keep feet dry and cool • Arch support / Snug, secure fit • Anatomical left and right / Superior fit and cushioning

**SIZE:** XL sock = M 12-15 shoe size; L sock = M 8-12 shoe size, W 10-13 shoe size; M sock = M 6-8 shoe size, W 6-10 shoe size.

001 Black/(Flint Grey)

101 White/(Flint Grey)



# NIKE TEAM SPORTS - COLOR MATCHING:

Many Nike Team colors have more than one name for the same color.

This chart shows colors of the *same value with different names*.

BLACK WHITE	BLUE GREY WOLF GREY	PEWTER	ANTHRACITE	DARK GREY HEATHER	DARK STEEL GREY
NATURAL	CHINO	DARK CINDER	BROWN	CLASSIC GREEN KELLY GREEN	DARK GREEN GORGE GREEN
AERO BLUE	TEAL	COLLEGE NAVY NAVY	LIGHT BLUE VALOR BLUE	ROYAL	COURT PURPLE FIELD PURPLE PURPLE
CARDINAL TEAM MAROON	CRIMSON	PINK FIRE	SCARLET UNIVERSITY RED	DARK MAROON DEEP MAROON	YELLOW STRIKE
BRIGHT GOLD SUNDOWN	TEAM GOLD VEGAS GOLD	DESERT ORANGE	ORANGE TEAM ORANGE	BRIGHT CERAMIC	NIKE TEAM SPORTS 



**NIKETEAM.COM**

